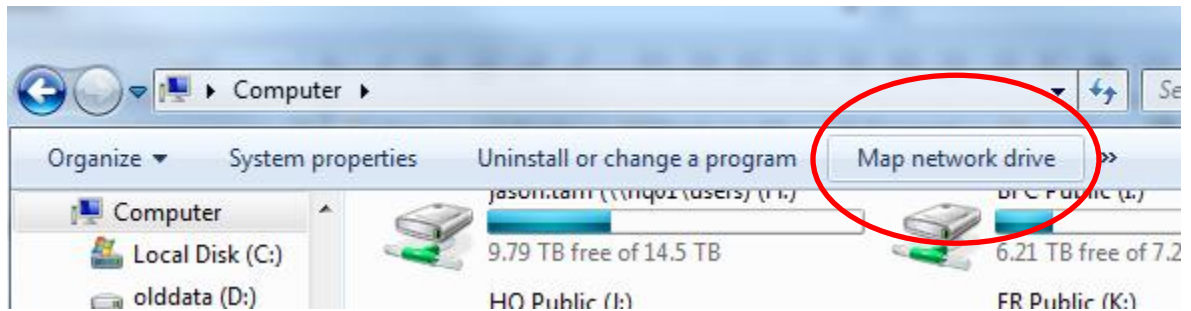


## How to Connect to GIS data at Head Office

On Window 7

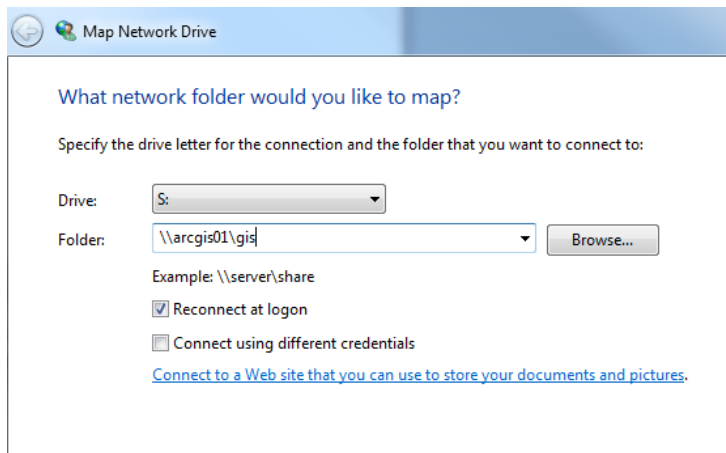
### Accessing the GIS Datagdb folder

1. Open window Explorer
2. Click on Computer
3. On the



top menu bar click on map network drive

4. Select a Drive letter S: (choose another if it is not free)
5. In the "folder" box enter in `\\arcgis01\gis\datagdb`



### Access the Orthos folder

1. Open window Explorer
2. Click on Computer
3. On the top menu bar click on map network drive
4. Select a free Drive letter (choose another if it is not free)
5. In the "folder" box enter in [\\arcgis01\orthos](#)

After Mapping the network drives you can add them to ArcMap's catalog